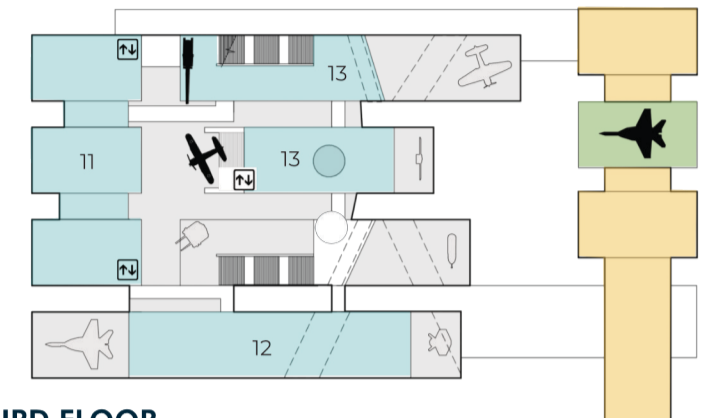
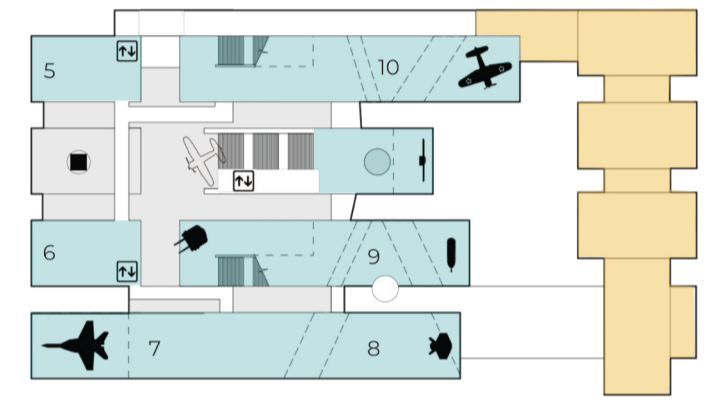


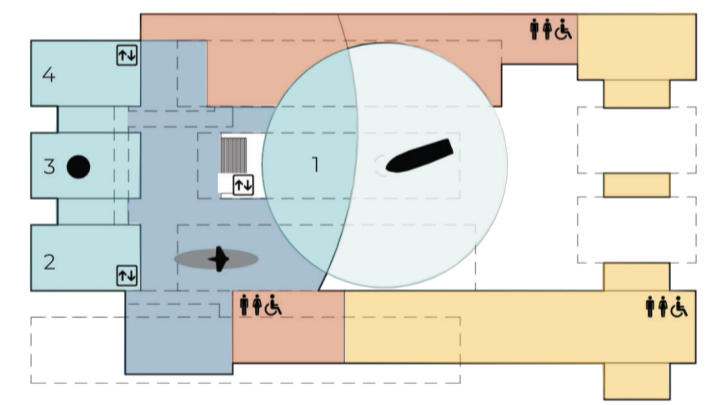
ROOF



THIRD FLOOR

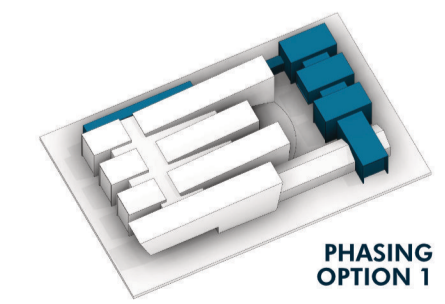


SECOND FLOOR

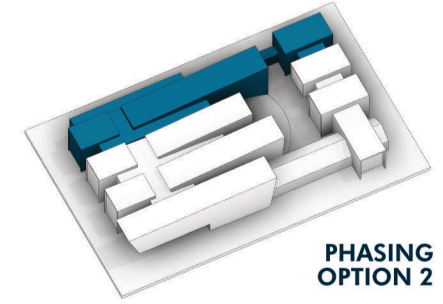


FIRST FLOOR

- ATRIUM
 - EXHIBITION GALLERIES
 - CAFE / RETAIL
 - INNOVATION DISTRICT
 - SKY DECK
- 1 Immersive Theater
 - 2 Subsurface
 - 3 Expedition
 - 4 Surface
 - 5 Aviation
 - 6 Space
 - 7 Fit & Final
 - 8 Post Cold War Era
 - 9 Cold War
 - 10 The Two Ocean Navy
 - 11 Antebellum / Civil War
 - 12 A New Navy
 - 13 Early US Navy



PHASING OPTION 1

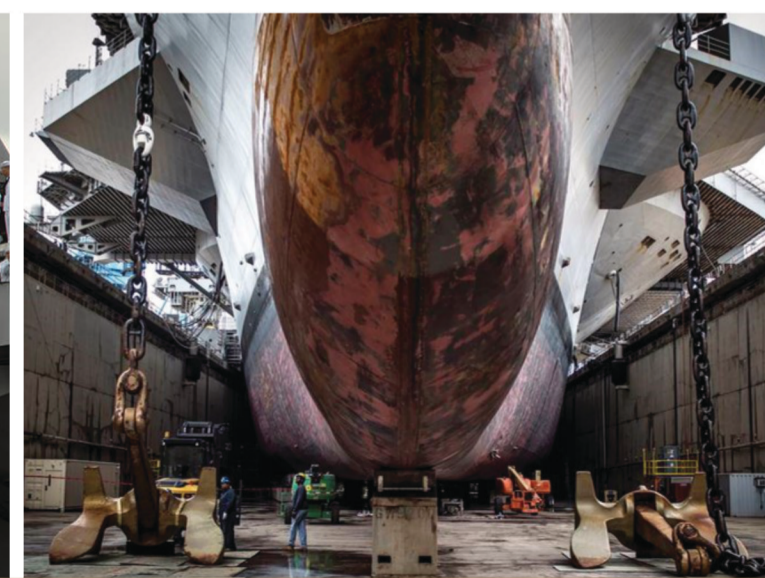


PHASING OPTION 2

Homeport is where the land meets the sea, where the community and the Navy come together.

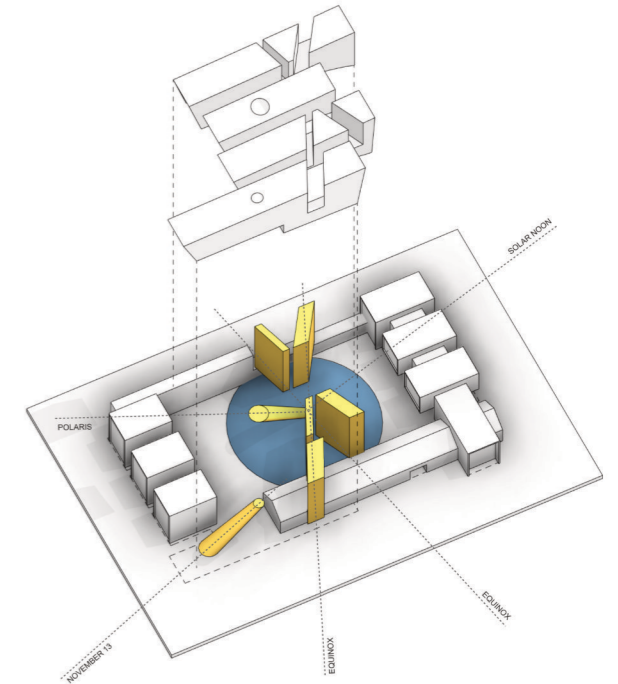
Homeport is a meaningful and sentimental concept for Navy sailors, representing a place of community, stability, and connection to their service and the world around them. This powerful metaphor is the design inspiration for The National Museum of the United States Navy which serves as a welcoming homeport for all visitors. The long, linear forms reflect the piers, ships, and Navy yard vernacular, providing a sense of connection to the work of the Navy and a greater appreciation for its history and heritage. Building materials reflect a refined interpretation of naval equipment and vessels with an elegant patterned and perforated metal rainscreen anchored on the urban edges with white brick volumes. An instrumentation strategy anchors the core of homeport. Drawing inspiration from age old celestial navigation tactics, the dome of the building creates site specific anchor that connects to prime wayfinding stars. By slicing and coring viewports, specific times of year, seasons, and days are easily identified and focused on the heart of the museum experience.

The museum's architecture metaphorically places the individual visitor at the threshold of land and sea, surrounded by immersive experiences and paths of discovery that celebrate, educate, and inspire. The museum tells the story of the Navy's crucial role in shaping the nation's growth, from securing its maritime borders and expanding its global reach, to defending its interests and preserving peace around the world.

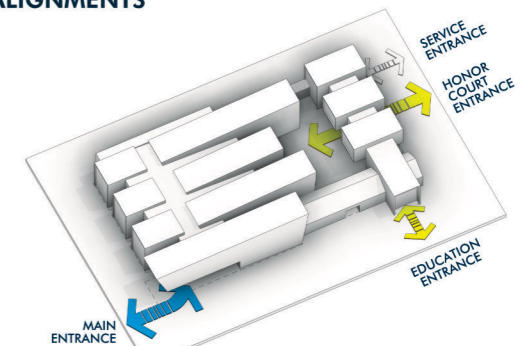




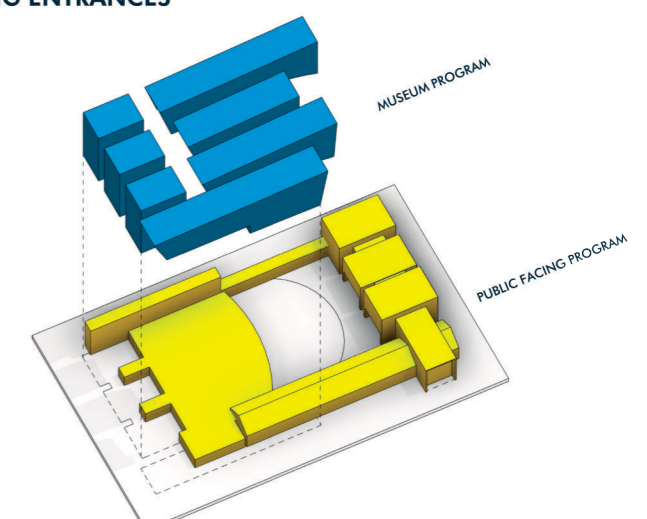
SERVING A DIVERSE AUDIENCE



SOLAR ALIGNMENTS



BUILDING ENTRANCES



PROGRAMMING

ENTRY

The Museum entry is recognizable from the street, where glimpses of macro artifacts and exhibitions announce wonders inside. A dramatically lit artifact projects above the street as a beacon for visitors and passers-by. The entry form shelters an open court that allows visitors to step into the museum environment.

The building responds to a community of active-duty sailors and veterans, their families and civilians of all backgrounds. The ground floor of the building is comprised of public venues while the galleries occupy the upper floors. The primary front entry is complimented by an entrance to the innovation hub which celebrates the Navy's research and development legacy and provides the location for the education program. Ground level access at the rear creates a welcoming pedestrian portal while a discreet service entry ensures the full functional operations of the building.

2 /// SSEAS GALLERIES STREET VIEW



3 /// HONOR WALL

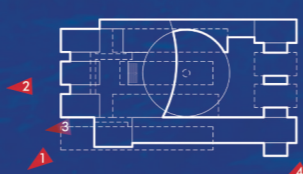


4 /// SCHOOL GROUP ENTRANCE



ENTRY

THE NATIONAL MUSEUM OF THE UNITED STATES NAVY



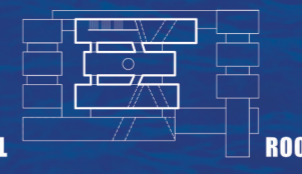
FIRST FL



SECOND FL



THIRD FL



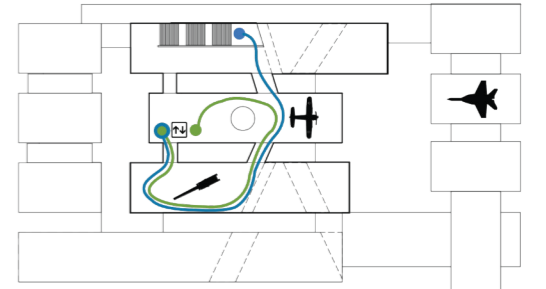
ROOF



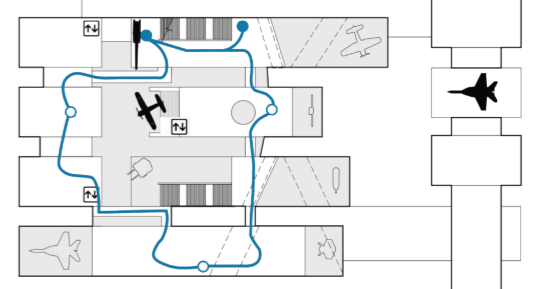


1777 ENTRANCE LOBBY ATRIUM

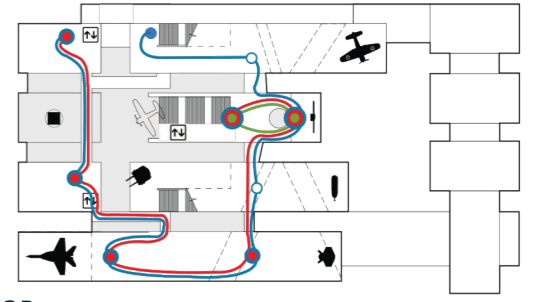
ROOF



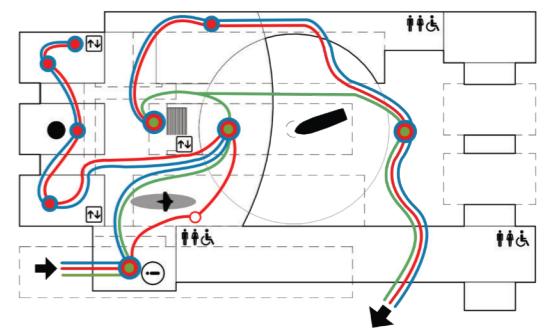
THIRD FLOOR



SECOND FLOOR

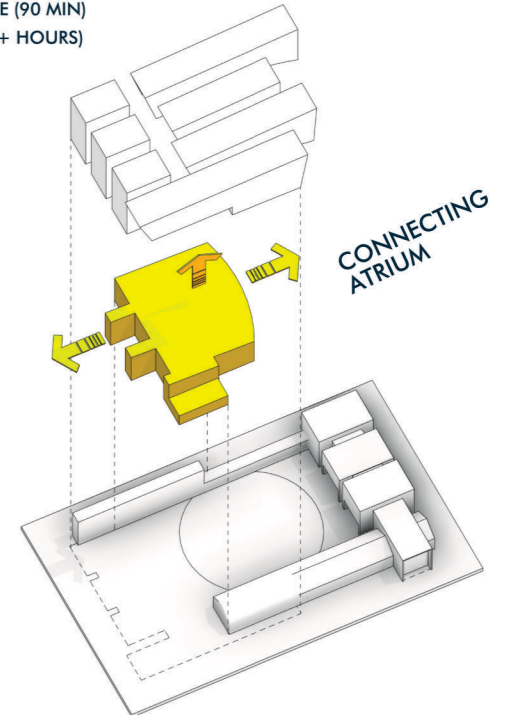


FIRST FLOOR



VISITOR EXPERIENCES

- JUST FLYING THROUGH (20 MIN)
- FAMILY HERITAGE (90 MIN)
- AFICIONADO (2+ HOURS)



ATRIUM

The light-filled Atrium presents orientation and dynamic views of the museum's main offerings. Introductory experiences are all located at ground level and everything a visitor needs to respond to their unique interests and available time is found here. On the right, a dynamic multimedia SSEAS introduction experience beckons with a glimpse of the Honor Court beyond.

Macro artifacts ahead and above invite interest and wonder. The grand stair and air bridges beyond are readily visible and build anticipation for the journey beyond. At left, the SSEAS Gallery glows with immersive murals, multimedia, and carefully illuminated artifacts.

PLAN ORGANIZATION

The Homeport museum is dedicated to the idea that the most powerful and impactful museum experiences are shared experiences. As such it is envisioned with physical and environmental accessibility beyond compliance to offer the best possible experience for all visitors together.



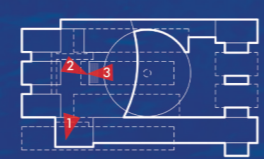
2777 SSEAS GALLERIES ENTRANCE



3777 GRAND STAIR



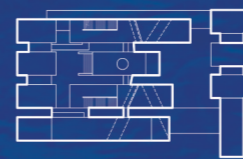
4777 AIR BRIDGE



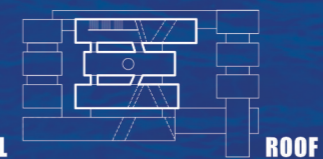
FIRST FL



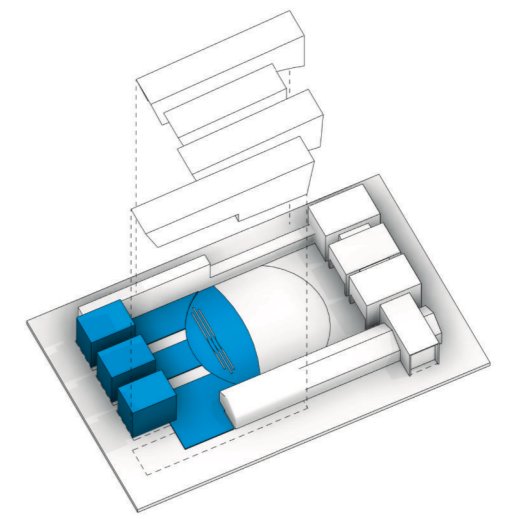
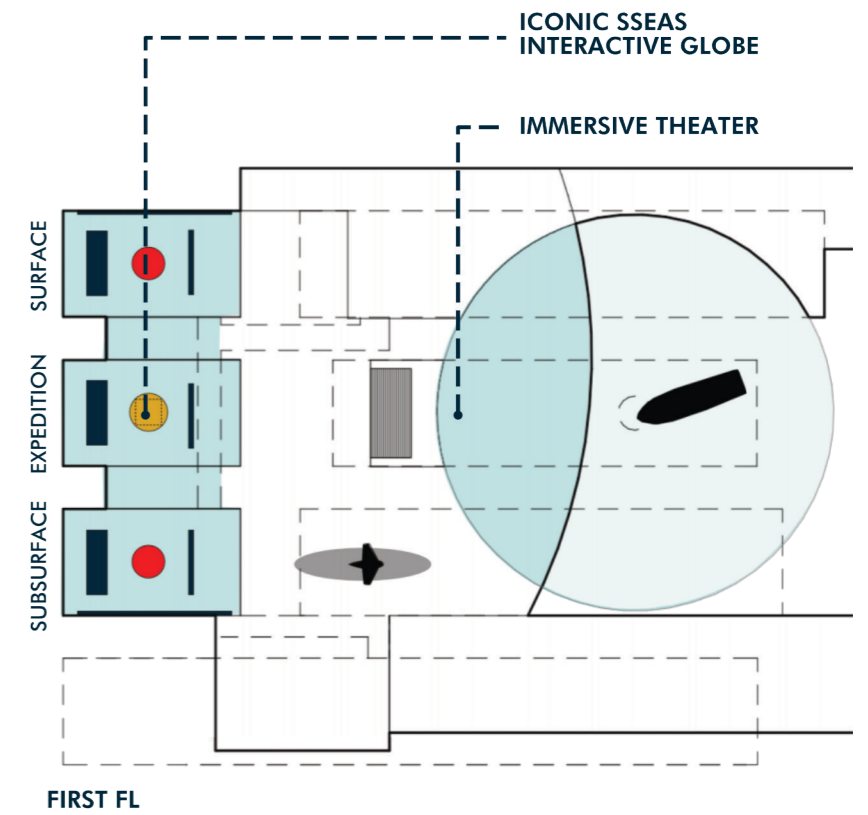
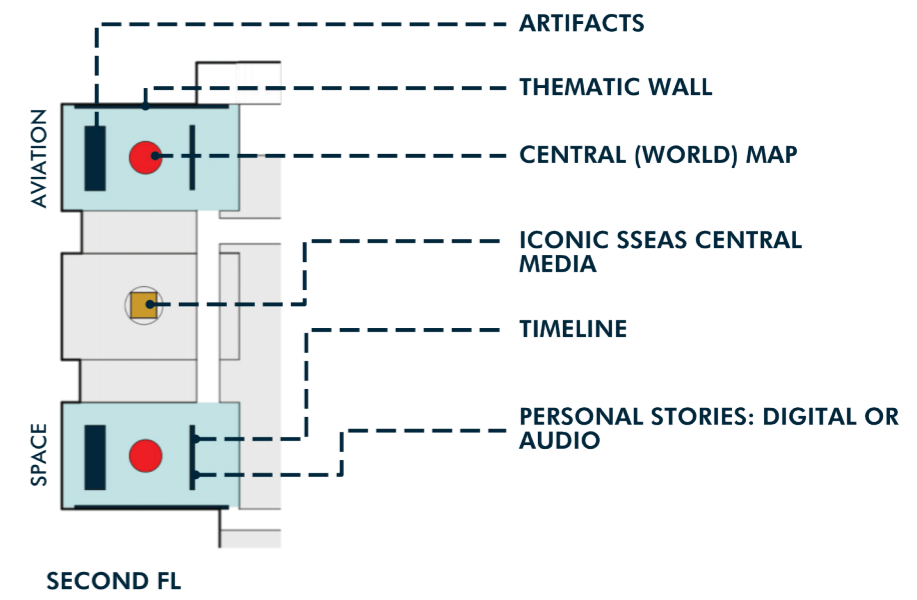
SECOND FL



THIRD FL



ROOF



2 /// INTERACTIVE MISSION STATIONS AND MAP TABLE



3 /// SSEAS CENTRAL MEDIA SCULPTURE AND INTERACTIVE GLOBE



4 /// PERSONAL STORIES OF SERVICE WALL

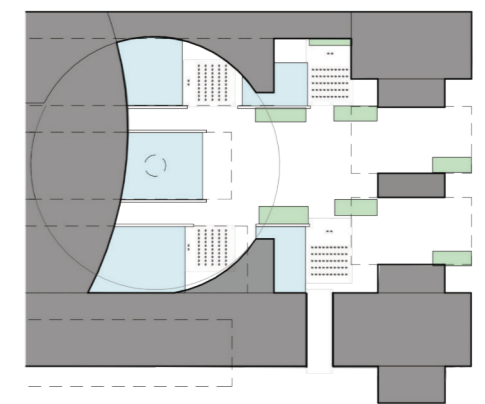


SSEAS EXHIBIT
The SSEAS exhibit is an introduction to the Navy's rich history and an overview of its significant role in the U.S. and around the world today. The SSEAS galleries will highlight the Navy's most exciting and important contemporary programs and bring these stories to life through personal accounts, compelling stories and eye-opening visual and emotional experiences.

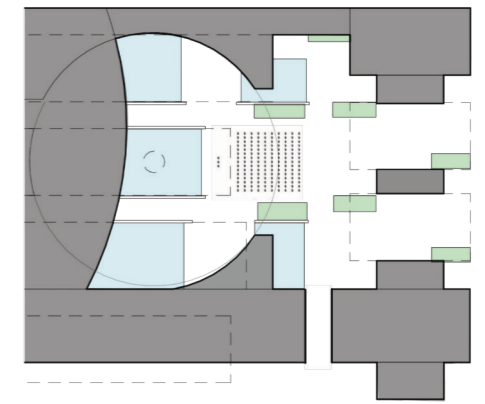
A signature element in the SSEAS exhibit is the central media sculpture that combines video, images, and text into a large-scale central experience. This two story media sculpture will be a compelling visual backdrop that reinforces the themes of all the galleries and will express the spirit of the Navy and all its facets.



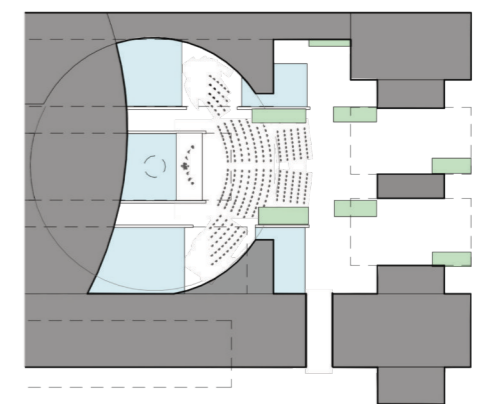
1 /// HONOR COURT



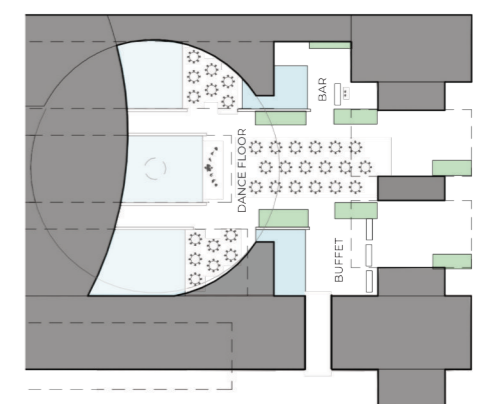
SMALL CEREMONY
(50 PEOPLE)



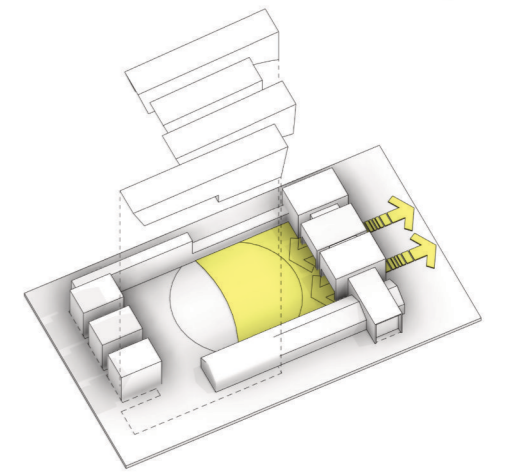
MEDIUM CEREMONY
(150 PEOPLE)



LARGE CEREMONY
(300 PEOPLE)



SEATED DINING
(300 PEOPLE)



2 /// PORTAL ENTRANCE



3 /// HONOR COURT



4 /// CLASSROOM

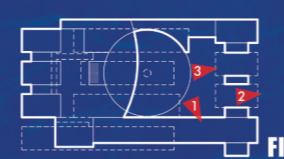
HONOR COURT

An adaptable open space that supports varied activities throughout the seasons, the Honor Court is shaped by the forms and contents of the Homeport's central bays. People and macro artifacts can see and be seen from multiple levels while the multimedia dome and museum entry are visible at grade.

The Honor Court may accommodate formal events ranging from fifty seated participants facing a dais, a band concert with an audience of 150 to 300 people to a 300-person seated dinner. Along the perimeter, educational program yards may support active indoor-outdoor programs. At other times, the court may be less active to provide a space for quiet reflection.

The Honor Court is zoned with dedicated facilities and security to be able to operate independently of the rest of the facility as needed.

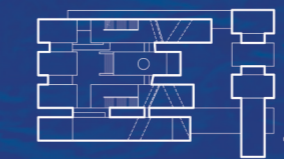
HONOR COURT
THE NATIONAL MUSEUM OF THE UNITED STATES NAVY



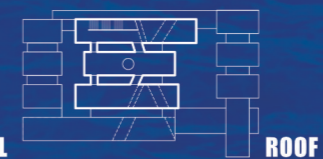
FIRST FL



SECOND FL

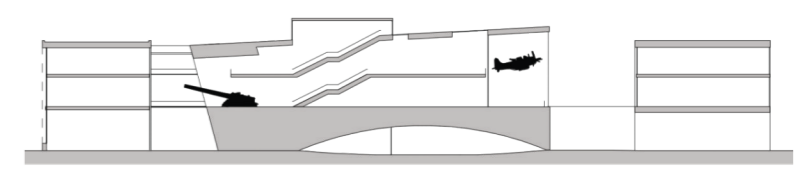


THIRD FL

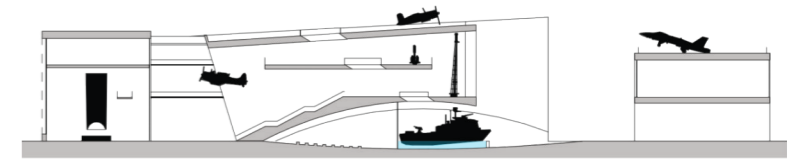


ROOF

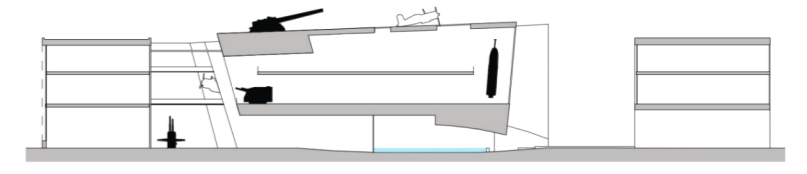




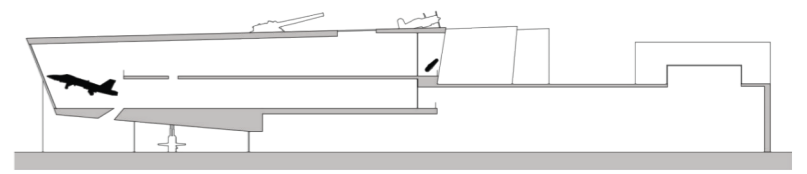
SECTION D



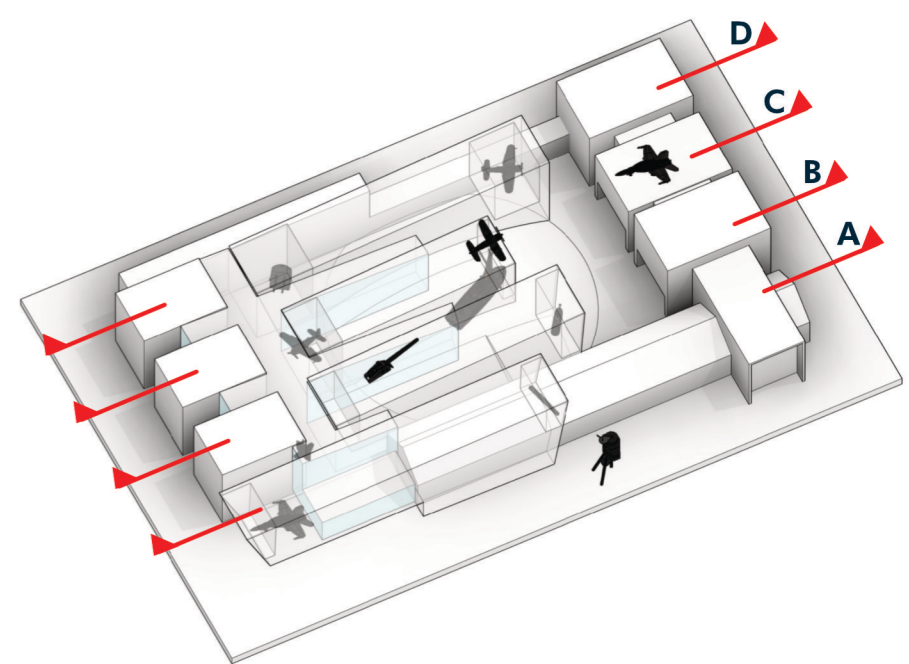
SECTION C



SECTION B



SECTION A



DYNAMIC ACCESS

NMUSN offers visitors the excitement of close encounters with the striking and significant macro artifacts in its collections. Significant because of their roles in Naval history, technology, and innovation, these objects are deployed throughout the facility as exhibitions as well as wayfinding markers.

Dynamic presentation of the macro artifacts at ends of bays and double-height spaces will entice visitors from afar as well as provide close-range experiences not available anywhere else. Exhibition of the macro artifacts at ground, second, and roof levels will be orchestrated thematically, and with commensurately scaled exhibition spaces for best effect.



2 /// POLARIS TUBE



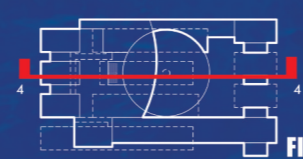
3 /// SKY DECK



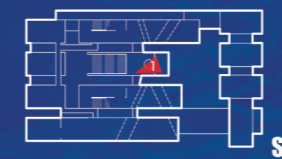
4 /// SECTION PERSPECTIVE

MACRO ARTIFACTS

THE NATIONAL MUSEUM OF THE UNITED STATES NAVY



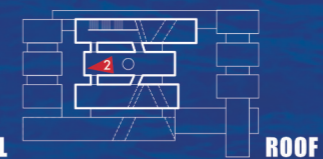
FIRST FL



SECOND FL



THIRD FL



ROOF

